

Be Independent.™



# BEDSIDE ECONORAIL™

BECAUSE YOUR BEDRAIL CAN GO ANYWHERE YOU GO



PRODUCT #5100



WATCH A DEMO





Ergonomic Handle  
Provides Support



Includes Padded  
Organizer Pouch



Secures to Any Home or  
Hospital Bed With  
Included Safety Strap



Easily Fits into  
Included Carrying Case



## FEATURES & BENEFITS

- **Full-Size Cushion Handle** – Allows for easy transfer in and out of bed.
- **Lightweight and Strong** – Made of aircraft-grade hardened anodized aluminum, weighs less than 2 lbs, supports 300 lbs.
- **Collapsible** – Fits in small spaces, even carry-on suitcases.
- **Portable** – Take it anywhere with stylish travel tote.
- **4-Pocket Organizer** – Provides storage space for handy items.
- **No-Slip Grips & Safety Strap** – Secures rail in-between mattress and bed frame.
- **Universal Height** – Accommodates any home or hospital bed.
- **Snap Together Assembly** – Installs in seconds with no tools required.

## SPECIFICATIONS

*Handle Height: 21.5"*

*Handle Width: 16" at base to 12" at top*

*Base Dimensions: 20" Deep x 16" Wide*

*Tube Diameter: 1"*

*Weight Capacity: 300 lbs*

*Weight of Product: 1.5 lbs*

*Made of: Anodized aluminum*

*Package Dimensions: 17.5" L x 12" W x 1.625" H*

*Case of 5 Dimensions: 17.5" L x 12" W x 5" H; 6 lbs*

## EASY ASSEMBLY (No Additional Tools Required)



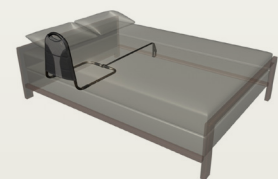
Attach Handle  
to L-tubes



Slide On Safety Strap And  
Attach Base Tubes to L-tubes



Slide on  
Organizer Pouch



Secure to Bed Frame With  
Included Safety Strap