



MULTI-USE CARPET CLEANER

Product Description:

This low-foaming, low-residue formula works aggressively to release carpet soils in 2 ways - as a spin cleaner and an extraction cleaner. This unique formulation satisfies many carpet cleaning requirements and provides safe/carefree maintenance of carpets. As a spin cleaner or extraction cleaner it brings these tough soils away from the carpet fibers without leaving a residue that can attract soils. This product is formulated with a fresh apple scent. Packaged for use exclusively in the innovative, SHURFIL™ Chemical Management System.

Features:

Safe to Use:

Contains no solvents or harsh alkalis. It has a neutral pH.

Environmentally Focused:

Safe and effective removal of normal soils yet powerful enough for the heaviest industrial soils.

Free Rinsing:

Easily rinses tough soils away from carpet fibers. Contains no components that void the new generation “stain resistant” carpet warranties. Its low foaming properties make carpet

Product Specifications:

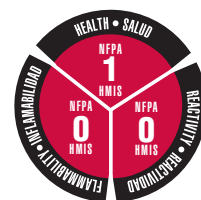
pH (concentrate)	8.0 ± 0.5
Appearance	“Apple Cider” or Light Brown
Fragrance.....	Fresh Apple
Solubility in Water.....	Complete
Flash Point.....	None

Ingredients:

Water.....	7732-18-5
Tetrasodium EDTA.....	64-02-8
NJ TSRN.....	100555-5004
Octenylsuccinic acid.....	28805-58-5
Dicarboxylic acid.....	53980-88-4

ECOLOGICAL INFORMATION:

- Biodegradable Surfactants
- 100% Recyclable Package



End-Use Rating

0	1	2	3	4
Minimal	Slight	Moderate	Serious	Severe
Minimo	Minimo	Moderar	Grave	Drastico



MULTI-USE CARPET CLEANER



Use Information:

Always thoroughly vacuum the carpet and remove any attached deposits prior to use. If there is a question of the carpet's colorfastness, always pre-test in an inconspicuous area. The SHURFIL™ bottle is preset to deliver a 1:128 ratio of Multi-Use Carpet Cleaner solution to any appropriate end use container. Use the diluted product as directed according to the concentrate label.

LOADING INSTRUCTIONS



SHURFIL™ LOADING INSTRUCTIONS:

1. **REMOVE CAP**
2. **POSITION BOTTLE** with spout on right.
3. **INSERT BOTTLE** into dispenser until firmly seated.

SHURFIL™ UNLOADING INSTRUCTIONS:

1. **GRASP** bottle by bottom.
2. **MOVE** release lever to right and pull bottle from unit.
3. **REPLACE CAP** and store bottle.

DIRECTIONS FOR USE:

EXTRACTION

1. **DILUTE** at 1 ounce per gallon (1:128 ratio) of hot water.
2. **EXTRACT**, then force dry the carpet.

SPIN BONNET

1. **DILUTE** at 1 ounce per gallon (1:128 ratio) of cold water.
2. **SPRAY** or treat the bonnet and carpet.
3. **SPIN BONNET** using a low speed rotary machine and appropriate driver.

First Aid:

If in eyes or on skin, immediately flush with plenty of water. Get medical attention if irritation persists. **If swallowed**, get medical attention. NEVER GIVE ANYTHING BY MOUTH TO AN UNCONSCIOUS PERSON.

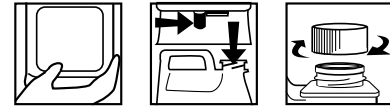
Handling and Storage:

SUGGESTED STORAGE TEMPERATURE: Store inside at 40-90°F.
SPECIAL HANDLING AND STORAGE: Handle in accordance with good industrial hygiene and safety practices. These practices include avoiding unnecessary exposure and removal of material from eyes, skin and clothing. Store in a cool, dry, ventilated area. **Protect from freezing.** Thoroughly rinse empty containers.
KEEP OUT OF REACH OF CHILDREN

© FRANKLIN Cleaning Technology® 2007
Great Bend, KS 67530 • SF5921TDS-0407

DILUTIONS DILUCIÓN	
HIGH	128
LOW	128

UNLOADING INSTRUCTIONS



INSTRUCCIONES DE CARGA:

1. **QUITE LA TAPA.**
2. **POSICIONE LA BOTELLA** con el pico a la derecha.
3. **INSERTE LA BOTELLA** dentro del dosificador y fíjela bien.

INSTRUCCIONES DE DESCARGA:

1. **AGARRE** la botella por la base.
2. **AFLOJE LA PALANCA** de soltar hacia la derecha y jale la botella hacia abajo.
3. **TAPE LA BOTELLA** y guárdela.

INSTRUCCIONES PARA SU USO:

EXTRACCIÓN

1. **DILUIR** 1 onza por galón (una proporción 1:128) de agua caliente.
2. **EXTRAER**, entonces forzar el secado.

BONETE GIRATORIO

1. **DILUIR** 1 onza por galón (una proporción de 1:128) de agua fría.
2. **ROCIAR** ó tratar el bonete y la alfombra.
3. **BONETE GIRATORIO** usar la maquina rotatoria a baja velocidad y manejarla apropiadamente.

Personal Protection:

Respiratory Protection: Not needed under normal conditions.
Ventilation: Use with adequate ventilation.
Eye Protection: Safety glasses are optional.
Protective Gloves: Protective gloves are optional.
Other Protective Clothing or Equipment: Wear clothing as necessary to prevent skin contact.

Transportation Information:

U.S. DOT - Proper Shipping Name: Not-Restricted
Marine Pollutant: No

MSDS Retrieval
Obtención de HDSM

www.franklintechnology.com
800-848-4901