



Hydrogen Peroxide Multi-Purpose Cleaner HD

Product Description:

An all purpose cleaner/degreaser formulated with biodegradable surfactants, citrus oils and hydrogen peroxide. This extremely versatile product can be used at two different dilution ratios to provide highly effective and reduced toxicity cleaning across a wide range of facility cleaning needs including glass, floors, spray and wipe cleaning, general degreasing, bathroom and shower room cleaning, tile and grout cleaning and restoration, carpet spotting and extraction, stainless steel cleaning and odor elimination. Packaged for use exclusively in the innovative, SHURFIL™ Chemical Management System.

Features:

One Product Cleaning System:

All water washable surfaces as well as carpet can be effectively cleaned with this product reducing the need to stock multiple SKU's.

Safe:

This product provides very effective and safe cleaning without the toxicity and environmental concerns of traditional cleaner/degreasers.

Product Specifications:

pH (concentrate)	4.5 ± 0.5
Appearance	Clear Liquid
Fragrance	None Added
Solubility in Water	Complete
Flash Point	None

Ingredients:

Water (7732-18-5), Hydrogen Peroxide (7722-84-1), Citrus Terpenes (94266-47-4), Citric acid (77-92-9), NJ TSRN (100555-5010).

Ecological Information:

- Biodegradable Surfactants
- Low VOC
- Contains no Phosphorus

End-Use Rating



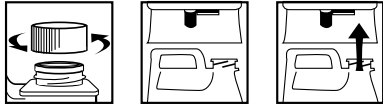
0	1	2	3	4
Minimal	Slight	Moderate	Serious	Severe
Minimo	Minimo	Moderar	Grave	Drastico



Use Information:

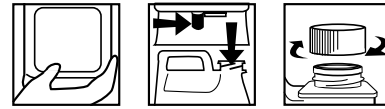
The SHURFIL™ bottle is preset to deliver a 1:26 ratio of Solution in the Low Flow operation and 1:128 ratio of solution in the High Flow operation. Use the diluted product as directed according to the concentrate label.

LOADING INSTRUCTIONS



DILUTIONS DILUCIÓN	
HIGH	128
LOW	26

UNLOADING INSTRUCTIONS



SHURFIL™ LOADING INSTRUCTIONS:

1. **REMOVE CAP**
2. **POSITION BOTTLE** with spout on right.
3. **INSERT BOTTLE** into dispenser until firmly seated.

SHURFIL™ UNLOADING INSTRUCTIONS:

1. **GRASP** bottle by bottom.
2. **MOVE** release lever to right and pull bottle from unit.
3. **REPLACE CAP** and store bottle.

DIRECTIONS FOR USE:

AUTOSCRUB CLEANING

1. **DILUTE** at 1 ounce per gallon (1:128 ratio) of cold water.
2. **CLEAN:** Scrub with red pad. Apply scrub and pick up in one operation. Rinsing not required.
3. **PICK UP TRAILS:** Use clean water and mop/bucket to pick up any trails left from autoscrubber.

GENERAL CLEANING

1. **DILUTE** at 5 ounces to a gallon (1:26 ratio) of cold water in a spray bottle.
2. **APPLY:** Spray or apply with a sponge, cloth or brush.
3. **WIPE DRY.**

First Aid:

If in eyes, flush immediately with cold water. Remove contact lenses. Continue flushing for 15 minutes holding eyelids apart. Get medical attention. **If on skin,** immediately wash with plenty of soap and water. Get medical attention. **If swallowed,** promptly drink large quantities of water. medical attention. Avoid alcohol. Do NOT induce vomiting. NEVER GIVE ANYTHING BY

MOUTH TO AN UNCONSCIOUS PERSON.

Handling and Storage:

STORAGE AND DISPOSAL: In case of spill: Clean up immediately. Place leaking container in well ventilated area. To clean up spill, flush with large quantity of water. Avoid run-off into storm sewers and ditches leading to natural waterways.

Storage: Do not contaminate water, food, and/or feed by storage. Avoid freezing conditions. Best Storage Temperatures are between 35°F and 85°F.

Disposal: Dispose of product (concentrated or diluted) by any method in accordance with local, state and federal laws. Best method is to recycle or reuse for intended purposes.

KEEP OUT OF REACH OF CHILDREN

INSTRUCCIONES DE CARGA:

1. **QUITE LA TAPA.**
2. **POSICIONE LA BOTELLA** con el pico a la derecha.
3. **INSERTE LA BOTELLA** dentro del dosificador y fíjela bien.

INSTRUCCIONES DE DESCARGA:

1. **AGARRE** la botella por la base.
2. **AFLOJE LA PALANCA** de soltar hacia la derecha y jale la botella hacia abajo.
3. **TAPE LA BOTELLA** y guárdela.

INSTRUCCIONES PARA SU USO:

LIMPIEZA CAN FROTADORA AUTOMÁTICA

1. **DILUIR** a 1 onza por galón (proporción 1:128) de agua fría.
2. **LIMPIAR:** Estregar con una almohadilla roja. Aplicar estregar y levantar en una sola operación. No hace falta enjuagar.
3. **LEVANTAR RASTROS:** Usar agua limpia y estropajo/cubo para levantar todo rastro de la frotadora automática.

LIMPIEZA GENERAL

1. **DILUIR** a 5 onza por galón (proporción 1:26) en un fría atomizador.
2. **APLICAR:** Atomizar o aplicar con esponja, paño o cepillo.
3. **SECAR** con repasador.

Personal Protection:

Respiratory Protection: Not needed under normal conditions.

Ventilation: Use with adequate ventilation.

Eye Protection: Safety glasses are recommended.

Protective Gloves: Protective gloves are recommended.

Other Protective Clothing or Equipment: Wear clothing as necessary to prevent skin contact.

Transportation Information:

U.S. DOT - Proper Shipping Name: Not-Restricted

Marine Pollutant: No