



SPEED SPRAY POWER CLEANER

Product Description:

Ultra concentrated, non-butyl spray and wipe multi-use power cleaner. This Green Seal certified product is an excellent heavy-duty cleaner that quickly removes tough soils from washable hard surfaces. Safe for use on all hard surfaces, even engine blocks. Packaged for use exclusively in the innovative, SHURFIL™ Chemical Management System.

Features:

Reduces Labor:

One product replaces the need for multiple cleaners and simplifies training. Quickly removes many tough soils, including adhesives.

Cost Effective:

One product removes ink marks, graffiti, grease and other soils on hard surfaces.

Product Specifications:

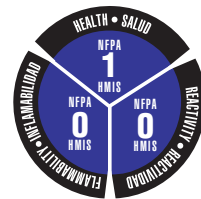
pH (concentrate)	7.5 ± 0.5
Appearance	Purple, Liquid
Fragrance	None Added
Freezing Point	About 32°F
Solubility in Water	Complete
Flash Point	205°F

Ingredients:

Water	7732-18-5
NJ TSRN	100555-5002
Alcohol ethoxylate	34398-01-1
Sodium salt of linear alkyl benzene sulfonate	25155-30-0
Isopropyl alcohol	67-63-0



"This product meets Green Seal's environmental standard for industrial and institutional cleaners based on its reduced human and aquatic toxicity and reduced smog production potential."



End-Use Rating

0	1	2	3	4
Minimal	Slight	Moderate	Serious	Severe
Minimo	Minimo	Moderar	Grave	Drastico



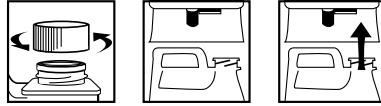
SPEED SPRAY POWER CLEANER



Use Information:

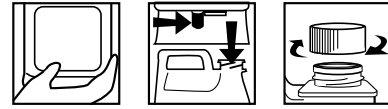
The SHURFIL™ bottle is preset to deliver a 1:25 ratio of Speed Spray Power Cleaner solution to any appropriate end use container. Use the diluted product as directed according to the concentrate label. Always dilute with COLD water.

LOADING INSTRUCTIONS



DILUTIONS DILUCIÓN	
HIGH	25
LOW	25

UNLOADING INSTRUCTIONS



SHURFIL™ LOADING INSTRUCTIONS

1. **REMOVE CAP**
2. **POSITION BOTTLE** with spout on right.
3. **INSERT BOTTLE** into dispenser until firmly seated.

SHURFIL™ UNLOADING INSTRUCTIONS

1. **GRASP** bottle by bottom.
2. **MOVE** release lever to right and pull bottle from unit.
3. **REPLACE CAP** and store bottle.

DIRECTIONS FOR USE

1. **DILUTE** at 13 ounces to a gallon (1:25 ratio) of cold water in a spray bottle, pail or bucket.
2. **APPLY:** Spray or apply with a sponge, cloth or brush.
3. **WIPE DRY.**

First Aid:

If in eyes, immediately flush with plenty of water for at least 15 minutes. Get medical attention. NEVER GIVE ANYTHING BY MOUTH TO AN UNCONSCIOUS PERSON.

Handling and Storage:

SUGGESTED STORAGE TEMPERATURE: Store inside at 40-90°F.
SPECIAL HANDLING AND STORAGE: Handle in accordance with good industrial hygiene and safety practices. These practices include avoiding unnecessary exposure and removal of material from eyes, skin and clothing. Store in a cool, dry, ventilated area. **Protect from freezing.** Thoroughly rinse empty containers.
KEEP OUT OF REACH OF CHILDREN

INSTRUCCIONES DE CARGA

1. **QUITE LA TAPA.**
2. **POSICIONE LA BOTELLA** con el pico a la derecha.
3. **INSERTE LA BOTELLA** dentro del dosificador y fíjela bien.

INSTRUCCIONES DE DESCARGA

1. **AGARRE** la botella por la base.
2. **AFLOJE LA PALANCA** de soltar hacia la derecha y jale la botella hacia abajo.
3. **TAPE LA BOTELLA** y guárdela.

INSTRUCCIONES PARA SU USO

1. **DILUIR** a 13 onza por galón (proporción 1:25) de agua fría en un frasco atomizador, balde o cubo.
2. **APLICAR:** Atomizar o aplicar con esponja, paño o cepillo.
3. **SECAR** con repasador.

Personal Protection:

Respiratory Protection: Not needed under normal conditions.
Ventilation: Use with adequate ventilation.
Eye Protection: Safety glasses are recommended.
Protective Gloves: Protective gloves are optional.
Other Protective Clothing or Equipment: Wear clothing as necessary to prevent skin contact.

Transportation Information:

U.S. DOT - Proper Shipping Name: Not-Restricted
Marine Pollutant: No