



ALL PURPOSE CLEANER

Product Description-

SHURFIL™ All Purpose Cleaner is Green Seal certified to effectively clean without harming the environment. All Purpose Cleaner is an ultra concentrated, unscented cleaner that removes soil without the use of harsh chemicals. Formulated for use on all washable surfaces including all types of finished floors, painted walls, Formica®, vinyl, plastic and metal surfaces. All Purpose Cleaner is extremely versatile and can be used in autoscrubbers, mop buckets and in spray bottles for general purpose cleaning. Packaged for use exclusively in the innovative, SHURFIL™ Chemical Management System.

Features-

Safe-

All Purpose Cleaner is an ultra concentrate that contains no petroleum derived surfactants or solvents, is non-flammable, contains no harsh alkalis and has a neutral pH.

Cost Effective-

Ultra concentrated, one 64 Oz. bottle makes 256 gallons of mopping, scrubbing and general purpose cleaning solution. Reduces storage space and eliminates waste.

Product Specifications-

pH (concentrate)	8.0 ± 0.5
Appearance	Red Liquid
Fragrance	None Added
Solubility in Water	Complete
Flash Point	None

Ingredients-

Water	7732-18-5
Alcohol ethoxylate	34398-01-1
Triethanolamine	102-71-6
Sodium xylene sulfonate	1300-72-7
Citric acid	77-92-9



"This product meets Green Seal's environmental standard for industrial and institutional cleaners based on its reduced human and aquatic toxicity and reduced smog production potential."



End-Use Rating

0	1	2	3	4
Minimal	Slight	Moderate	Serious	Severe
Minimo	Minimo	Moderar	Grave	Drastico



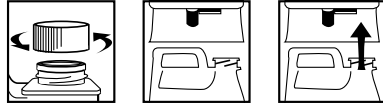
ALL PURPOSE CLEANER

#9

Use Information-

The SHURFIL™ bottle is preset to deliver a 1:512 ratio of All Purpose Cleaner solution to any appropriate end use container. Use the diluted product as directed according to the concentrate label.

LOADING INSTRUCTIONS



SHURFIL™ LOADING INSTRUCTIONS:

1. **REMOVE CAP**
2. **POSITION BOTTLE** with spout on right.
3. **INSERT BOTTLE** into dispenser until firmly seated.

SHURFIL™ UNLOADING INSTRUCTIONS:

1. **GRASP** bottle by bottom.
2. **MOVE** release lever to right and pull bottle from unit.
3. **REPLACE CAP** and store bottle.

DIRECTIONS FOR USE:

AUTOSCRUB CLEANING

1. **DILUTE** at 1/4 ounce per gallon (1:512 ratio) of cold water.
2. **CLEAN:** Scrub with red pad. Apply scrub and pick up in one operation. Rinsing not required.
3. **PICK UP TRAILS:** Use clean water and mop/bucket to pick up any trails left from autoscrubber.

GENERAL CLEANING

1. **DILUTE** at 1/4 ounce to a gallon (1:512 ratio) of cold water in a spray bottle, pail or bucket.
2. **APPLY:** Spray or apply with a sponge, cloth or brush.
3. **WIPE DRY.**

First Aid-

If in eyes or on skin, immediately flush with plenty of water. Get medical attention if irritation persists. **If swallowed,** get medical attention. NEVER GIVE ANYTHING BY MOUTH TO AN UNCONSCIOUS PERSON.

Handling and Storage-

SUGGESTED STORAGE TEMPERATURE: Store inside at 40-90°F.

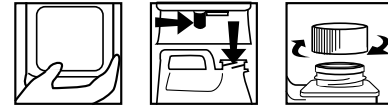
SPECIAL HANDLING AND STORAGE: Handle in accordance with good industrial hygiene and safety practices. These practices include avoiding unnecessary exposure and removal of material from eyes, skin and clothing. Store in a cool, dry, ventilated area. **Protect from freezing.** Thoroughly rinse empty containers.

KEEP OUT OF REACH OF CHILDREN

DILUTIONS DILUCIÓN

HIGH	512
LOW	512

UNLOADING INSTRUCTIONS



INSTRUCCIONES DE CARGA:

1. **QUITE LA TAPA.**
2. **POSICIONE LA BOTELLA** con el pico a la derecha.
3. **INSERTE LA BOTELLA** dentro del dosificador y fíjela bien.

INSTRUCCIONES DE DESCARGA:

1. **AGARRE** la botella por la base.
2. **AFLOJE LA PALANCA** de soltar hacia la derecha y jale la botella hacia abajo.
3. **TAPE LA BOTELLA** y guárdela.

INSTRUCCIONES PARA SU USO:

LIMPIEZA CAN FROTADORA AUTOMÁTICA

1. **DILUIR** a 1/4 onza por galón (proporción 1:512) de agua fría.
2. **LIMPIAR:** Estregar con una almohadilla roja. Aplicar estregar y levantar en una sola operación. No hace falta enjuagar.
3. **LEVANTAR RASTROS:** Usar agua limpia y estropajo/cubo para levantar todo rastro de la frotadora automática.

LIMPIEZA GENERAL

1. **DILUIR** a 1/4 onza por galón (proporción 1:512) en un fría atomizador, balde o cubo.
2. **APLICAR:** Atomizar o aplicar con esponja, paño o cepillo.
3. **SECAR** con repasador.

Personal Protection-

Respiratory Protection: Not needed under normal conditions.

Ventilation: Use with adequate ventilation.

Eye Protection: Safety glasses are optional.

Protective Gloves: Protective gloves are optional.

Other Protective Clothing or Equipment: Wear clothing as necessary to prevent skin contact.

Transportation Information-

U.S. DOT - Proper Shipping Name: Not-Restricted

Marine Pollutant: No