



# GLASS CLEANER

## Product Description:

Glass Cleaner is Green Seal certified to effectively clean without harming the environment. A highly concentrated cleaner that rapidly penetrates and dissolves smears, smoke film, insects, soil, finger marks and food stains from glass, plastic, Plexiglas®, chrome and other hard surfaces. Packaged for use exclusively in the innovative, SHURFIL™ Chemical Management System.

## Features:

### User Friendly:

Fast drying formula, cuts through film and grime quickly. It leaves surfaces sparkling clean with no streaks or smears. Quick easy cleaning reduces labor.

### Cost Effective:

Multi-surface cleaner recommended for use on glass, windows, mirrors, plastic, Plexiglas®, metal and other hard surfaces. Reduces the number of cleaning products required and simplifies training.

## Product Specifications:

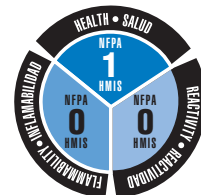
pH	6.8 ± 0.6
Appearance	Clear Blue Liquid
Fragrance	None Added
Solubility in Water	Complete
Flash Point	None

## Ingredients:

Water	7732-18-5
NJ TSRN	100555-5002
Magnesium alkyl sulfate	3097-08-3
NJ TSRN	100555-5003



"This product meets Green Seal's environmental standard for industrial and institutional cleaners based on its reduced human and aquatic toxicity and reduced smog production potential."



## End-Use Rating

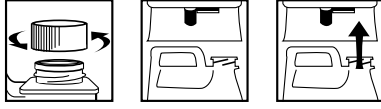
0	1	2	3	4
Minimal	Slight	Moderate	Serious	Severe
Minimo	Minimo	Moderar	Grave	Drastico



## Use Information:

The SHURFIL™ bottle is preset to deliver a 1:64 ratio of Glass Cleaner solution to any appropriate end use container. Use the diluted product as directed according to the concentrate label. Always dilute with COLD water.

### LOADING INSTRUCTIONS



### SHURFIL™ LOADING INSTRUCTIONS:

1. **REMOVE CAP**
2. **POSITION BOTTLE** with spout on right.
3. **INSERT BOTTLE** into dispenser until firmly seated.

### SHURFIL™ UNLOADING INSTRUCTIONS:

1. **GRASP** bottle by bottom.
2. **MOVE** release lever to right and pull bottle from unit.
3. **REPLACE CAP** and store bottle.

### DIRECTIONS FOR USE:

1. **DILUTE** at 2 ounces per gallon of cold water (1:64 ratio).
2. **SPRAY** a fine mist directly into cleaning cloth or onto the entire surface to be cleaned.
3. **WIPE and POLISH** the surface until dry with a clean lint free cloth or paper towel.

## First Aid:

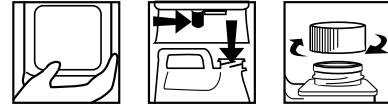
**If in eyes or on skin**, immediately flush with plenty of water. Get medical attention if irritation persists. **If swallowed**, get medical attention. NEVER GIVE ANYTHING BY MOUTH TO AN UNCONSCIOUS PERSON.

## Handling and Storage:

**SUGGESTED STORAGE TEMPERATURE:** Store inside at 40-90°F.  
**SPECIAL HANDLING AND STORAGE:** Handle in accordance with good industrial hygiene and safety practices. These practices include avoiding unnecessary exposure and removal of material from eyes, skin and clothing. Store in a cool, dry, ventilated area. **Protect from freezing.** Thoroughly rinse empty containers.  
**KEEP OUT OF REACH OF CHILDREN**

DILUTIONS DILUCIÓN	
HIGH	64
LOW	64

### UNLOADING INSTRUCTIONS



### INSTRUCCIONES DE CARGA:

1. **QUITE LA TAPA.**
2. **POSICIONE LA BOTELLA** con el pico a la derecha.
3. **INSERTE LA BOTELLA** dentro del dosificador y fíjela bien.

### INSTRUCCIONES DE DESCARGA:

1. **AGARRE** la botella por la base.
2. **AFLOJE LA PALANCA** de soltar hacia la derecha y jale la botella hacia abajo.
3. **TAPE LA BOTELLA** y guárdela.

### INSTRUCCIONES PARA SU USO:

1. **DILUIR** a razón de 2 onzas por galón de agua fría (proporción de 1:64).
2. **ROCÍE** una niebla fina directamente en el trapo de limpieza o sobre la superficie entera que se limpiará.
3. **PULIR y LIMPIAR** la superficie hasta secar con un paño libre de lanilla ó servilleta de papel.

## Personal Protection:

**Respiratory Protection:** Not needed under normal conditions.  
**Ventilation:** Use with adequate ventilation.  
**Eye Protection:** Safety glasses are optional.  
**Protective Gloves:** Protective gloves are optional.  
**Other Protective Clothing or Equipment:** Wear clothing as necessary to prevent skin contact.

## Transportation Information:

**U.S. DOT - Proper Shipping Name:** Not-Restricted  
**Marine Pollutant:** No