



Drain Flush

ENZYME BASED DRAIN CLEANER/MAINTAINER

DATA SHEET

PRODUCT DESCRIPTION:

Drain Flush is a combination of powerful enzymes and living bacteria that work on contact to improve the flow of slow running drains and prevent clogs caused by built-up organic wastes, grease and food scraps. Effective detergents and odor neutralizers help finish the job. A safe, non-toxic, non-acid, and environmentally positive way to treat drain/plumbing systems.

FEATURES:

Effective Cleaning:

Contains a high concentration of four different enzymes (protease, lipase, amylase, and cellulase) that act to accelerate soil liquification in plumbing systems.

Safe To Use:

Neutral pH. This product contains no harsh acids or caustics. The bacteria used are not considered pathogenic to humans or animals.

Environmentally Friendly:

No harsh fuming acids. Biodegradable concentrate.

Dual Functionality:

Contains both free enzymes and bacterial cultures. Free enzymes provide quick action. Bacterial cultures produce additional enzymes to continue the cleaning process.

PRODUCT SPECIFICATIONS:

pH	7.0 ± 0.5
Appearance	Greenish-Blue
Standard Plate Count (CFU/ml)	4.0 x 10 ⁷
Fragrance	Floral
Solubility in Water	Complete
Non-Volatile Solids	2.6 ± 0.2
Flash Point (SCC)	None

INGREDIENTS:

Bacterial subtilisin protease	9014-01-1
Water	7732-18-5
Nonyl phenoxy poly (ethyleneoxy) ethanol	9016-45-9

ECOLOGICAL INFORMATION:

- Biodegradable Surfactants
- No Solvents

DILUTIONS	HEALTH	FLAMMABILITY	REACTIVITY
CONCENTRATE	NFPA 1 HMIS	NFPA 0 HMIS	NFPA 0 HMIS
CONCENTRAR			
PROPORCIÓN	SALUD	INFLAMABILIDAD	REACTIVIDAD
	0	1	2
	3	4	
	Minimal	Slight	Moderate
	Minimo	Minimo	Moderar
			Serious
			Grave
			Severe
			Drastico

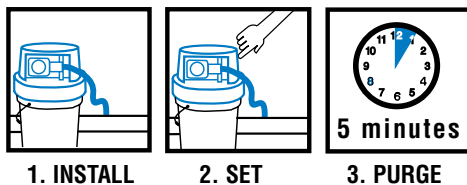
Drain Flush ENZYME BASED DRAIN CLEANER

DIRECT

USE INFORMATION

This product will help prevent clogged lines and drains, and open slow ones. It is not designed to open blockages. Blocked lines should be mechanically opened before use of this product.

INITIAL SET-UP

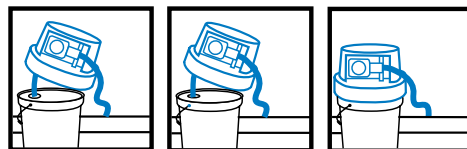


1. INSTALL

2. SET

3. PURGE

ROUTINE MAINTENANCE



1. REMOVE

2. EXCHANGE

3. REPLACE

INITIAL SET-UP

1. **INSTALL** Autoshot Dispensing System following the instruction sheet provided.
2. **SET** Autoshot System to dispense Drain Flush for 1-5 minutes up to 8 times a day.
3. **PURGE** the system by manually running for 5 minutes.

ROUTINE MAINTENANCE

1. **REMOVE** Autoshot Dispensing System from the pail of **Drain Flush**.
2. **EXCHANGE** the empty pail with a new pail.
3. **REPLACE** Autoshot Dispensing System.

FIRST AID:

If in eyes or on skin, immediately flush with plenty of water. Get medical attention if irritation persists. **If swallowed**, get medical attention. **NEVER GIVE ANYTHING BY MOUTH TO AN UNCONSCIOUS PERSON.**

HANDLING AND STORAGE:

SUGGESTED STORAGE TEMPERATURE: Store inside at 40-90°F. **SPECIAL HANDLING AND STORAGE:** Handle in accordance with good industrial hygiene and safety practices. These practices include avoiding unnecessary exposure and removal of material from eyes, skin and clothing. Store in a cool, dry, ventilated area. **Protect from freezing.** Thoroughly rinse empty containers. **KEEP OUT OF REACH OF CHILDREN.**

PERSONAL PROTECTION:

Respiratory Protection: Not needed under normal conditions.
Ventilation: Use with adequate ventilation.
Eye Protection: Safety glasses are recommended.
Protective Gloves: Safety gloves are recommended.
Other Protective Clothing or Equipment: Wear clothing as necessary to prevent skin contact.

TRANSPORTATION INFORMATION:

U.S. DOT - Proper Shipping Name: Not regulated by DOT.
Marine Pollutant: No

MSDS RETRIEVAL
Read MSDS before using this product
800-551-0101

www.franklintechnology.com

OBTENCIÓN DE HDSM
Leer la HDSM antes de utilizar este producto

FOR CHEMICAL EMERGENCY,
SPILL, LEAK, FIRE, EXPOSURE OR ACCIDENT
CALL CHEMTREC DAY OR NIGHT
800-424-9300

PARA EMERGENCIAS QUÍMICA DERRAMES,
ESCAPES, FUEGO, EXPOSICIÓN O ACCIDENTE
LLAMAR DE DÍA O DE NOCHE A CHEMTREC

TECH HOTLINE
800-810-4829
LINEA DE TÉCNICA

CLEANING TECHNOLOGIES GROUP™

a division of CPAC

© FRANKLIN Cleaning Technology™ 2001 • Great Bend, KS 67530

F2115TDS-1100