



SHOWER AND TILE CLEANER HD

Product Description:

A heavy duty formulation that effectively removes body oils, soap scum, and mineral buildup in the pores of ceramic and quarry tile, grout, and concrete walls and floors commonly found in showers and restrooms. Safe for use on chrome, stainless steel, glass, brass or copper fixtures. Can be safely used anywhere hard water salt or soap scum buildup is a problem. Packaged for use exclusively in the innovative, SHURFIL™ Chemical Management System.

Features:

Effective Cleaning:

Removes body oils, soap scum and hard water deposits from grout, concrete and quarry tile found in showers and restrooms. Brightens brass and copper. Clinging foam increases contact time for maximum cleaning of vertical shower and tile surfaces.

Safe:

No harsh fuming acids. Biodegradable concentrate. Safely removes hard water deposits on shower and restroom fixtures.

Product Specifications:

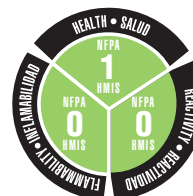
pH (concentrate)	2.0 ± 0.3
Appearance	Light Green
Fragrance	Bland
Freezing Point	About 32°F
Solubility in Water	Complete
Flash Point	None

Ingredients:

Water	7732-18-5
Glycolic acid	79-14-1
Nonyl phenoxy poly (ethylene oxy) ethanol	9016-45-9

ECOLOGICAL INFORMATION:

- Biodegradable Surfactants
- Contains No Phosphorus • No Solvents



End-Use Rating

0	1	2	3	4
Minimal	Slight	Moderate	Serious	Severe
Minimo	Minimo	Moderar	Grave	Drastico



SHOWER AND TILE CLEANER HD

#14

Use Information:

The SHURFIL™ bottle is preset to deliver a 1:16 ratio of Shower and Tile Cleaner HD solution to any appropriate end use container. Use the diluted product as directed according to the concentrate label.

LOADING INSTRUCTIONS



SHURFIL™ LOADING INSTRUCTIONS:

1. **REMOVE CAP.**
2. **POSITION BOTTLE** with spout on right.
3. **INSERT BOTTLE** into dispenser until firmly seated.

SHURFIL™ UNLOADING INSTRUCTIONS:

1. **GRASP** bottle by bottom.
2. **MOVE** release lever to right and pull bottle from unit.
3. **REPLACE CAP** and store bottle.

DIRECTIONS FOR USE:

1. **DILUTE** at 8 ounces per gallon (1:16 ratio) of cool or warm water.
2. **APPLY** with a mop, sprayer or sponge.
3. **SCRUB** with a brush or rotary machine.
4. **RINSE** with clean potable water.

First Aid:

If in eyes or on skin, immediately flush with plenty of water. Get medical attention if irritation persists. **If swallowed**, get medical attention. NEVER GIVE ANYTHING BY MOUTH TO AN UNCONSCIOUS PERSON.

Handling and Storage:

SUGGESTED STORAGE TEMPERATURE: Store inside at 40-90°F.

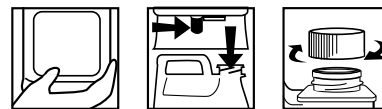
SPECIAL HANDLING AND STORAGE: Handle in accordance with good industrial hygiene and safety practices. These practices include avoiding unnecessary exposure and removal of material from eyes, skin and clothing. Store in a cool, dry, ventilated area. **Protect from freezing.** Thoroughly rinse empty containers.

KEEP OUT OF REACH OF CHILDREN

DILUTIONS DILUCIÓN

HIGH	16
LOW	16

UNLOADING INSTRUCTIONS



INSTRUCCIONES DE CARGA:

1. **QUITE LA TAPA.**
2. **POSICIONE LA BOTELLA** con el pico a la derecha.
3. **INSERTE LA BOTELLA** dentro del dosificador y fíjela bien.

INSTRUCCIONES DE DESCARGA:

1. **AGARRE** la botella por la base.
2. **AFLOJE LA PALANCA** de soltar hacia la derecha y jale la botella hacia abajo.
3. **TAPE LA BOTELLA** y guárdela.

INSTRUCCIONES PARA SU USO:

1. **DILUYA** en razón de 8 onzas por galón (1:16 proporción) de agua fría o caliente.
2. **APLIQUE** con un estropajo, rociador o esponja.
3. **FRIEGUE** con un cepillo o máquina rotativa.
4. **ENJUAGUE** con agua potable limpia.

Personal Protection:

Respiratory Protection: Not needed under normal conditions.

Ventilation: Use with adequate ventilation.

Eye Protection: Safety glasses are optional.

Protective Gloves: Protective gloves are optional.

Other Protective Clothing or Equipment: Wear clothing as necessary to prevent skin contact.

Transportation Information:

U.S. DOT - Proper Shipping Name: Not-Restricted

Marine Pollutant: No